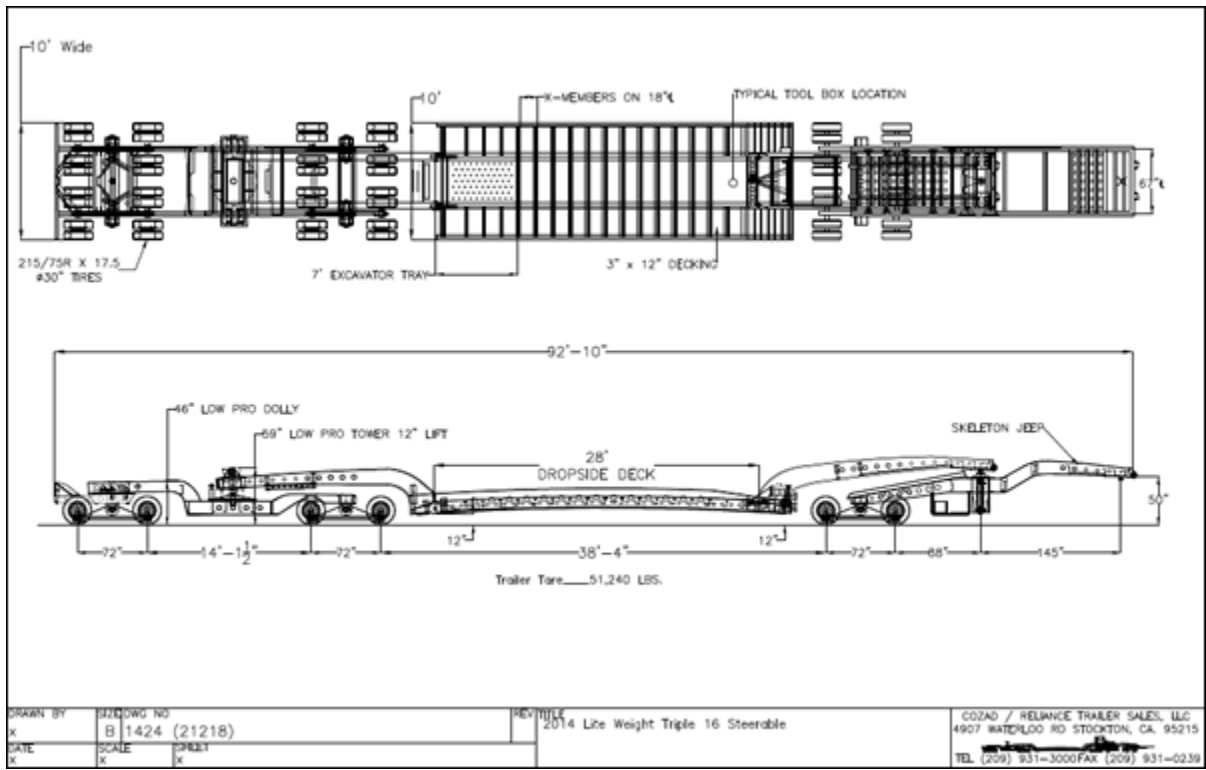


Cozad 85T Light Weight Triple 16 Steerable



Cozad 85T Light Weight Triple 16 Steerable

Trailer Capacity:

85 short tons

170,000 lbs

77,110 kg

Trailer Weight:

51,240 lbs

23,242 kg

This is 4MR's FS19 trailer which I updated for FS19 to have the real autosteering. I have now updated it for FS22. It has color selection, optional flags, and deck type/length selection.

Flags:

No



Yes



Cozad 85T Light Weight Triple 16 Steerable

Deck Type:

Beam



Drop Rail



Cozad 85T Light Weight Triple 16 Steerable

Deck Length Extension

7 feet



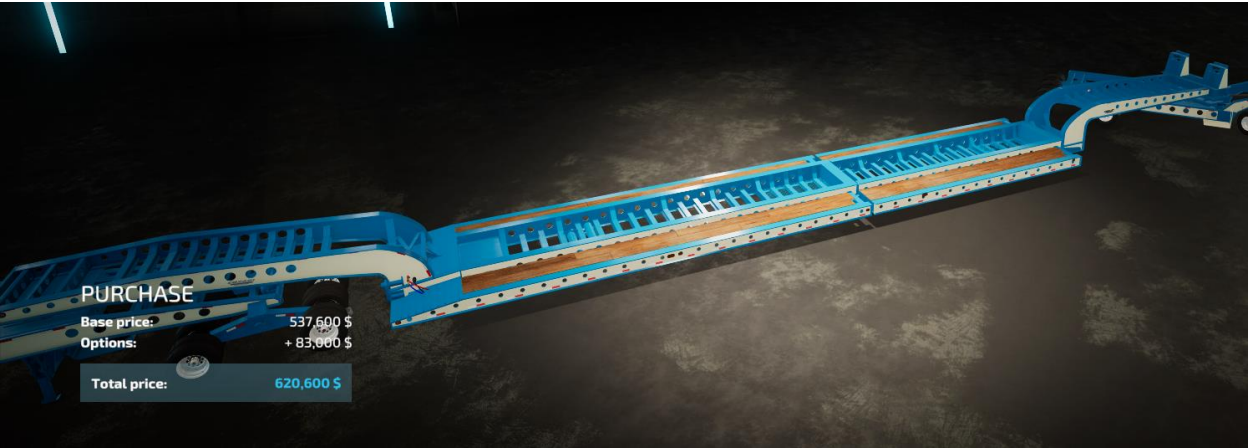
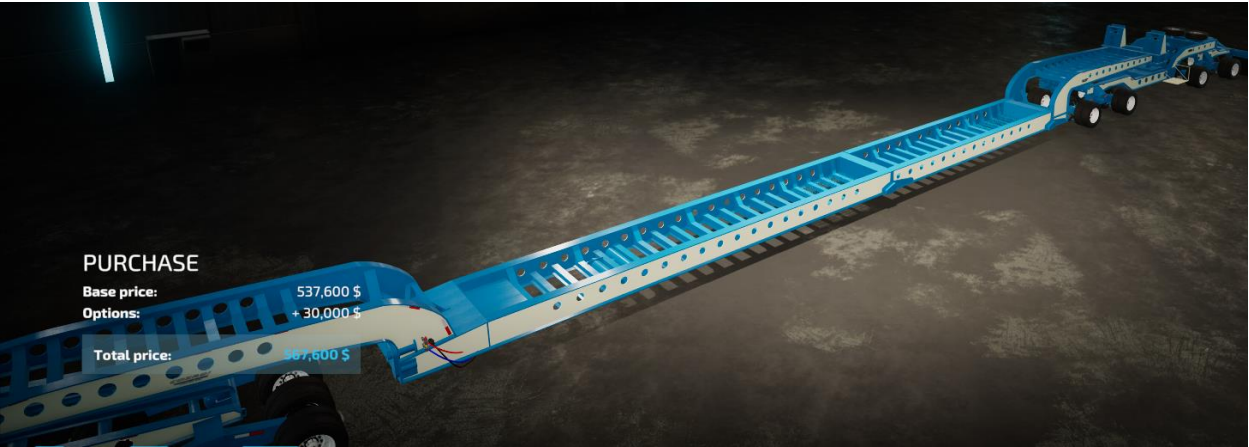
Cozad 85T Light Weight Triple 16 Steerable

14 feet



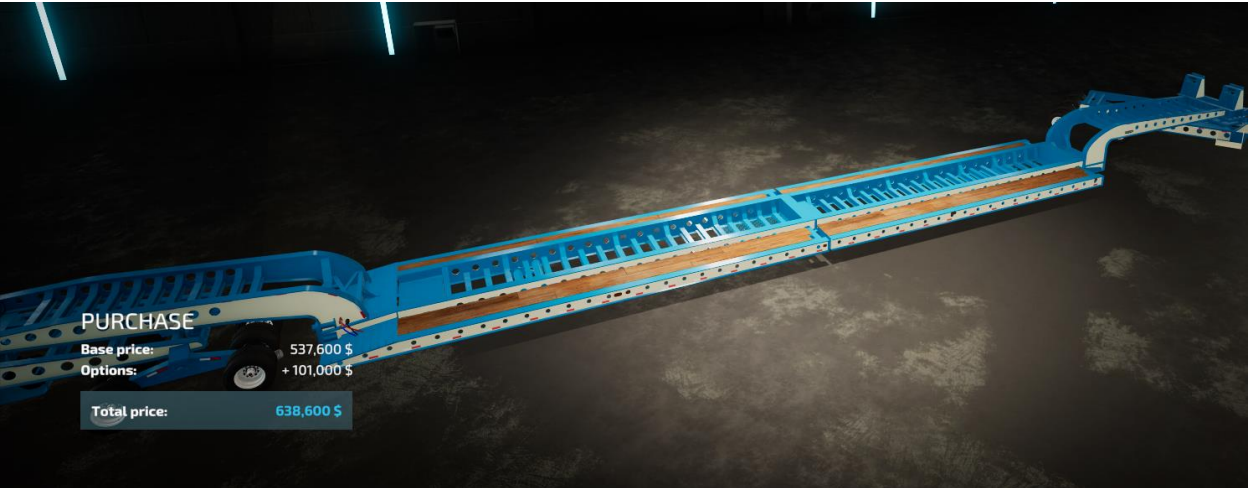
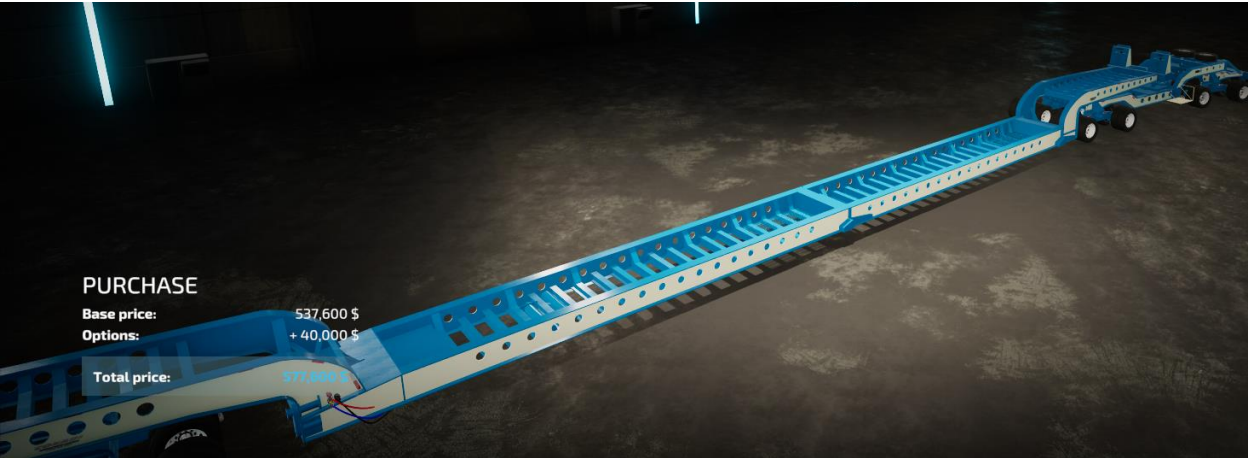
Cozad 85T Light Weight Triple 16 Steerable

21 feet



Cozad 85T Light Weight Triple 16 Steerable

28 feet



Cozad 85T Light Weight Triple 16 Steerable

Trailer Functions

Raise Jeep Tower

Select Jeep



Use `AXIS_FRONTLOADER_ARM2` (pc lshift + j/n) to raise lower



Raise Trailer Tower

Select Trailer



Use `AXIS_FRONTLOADER_ARM2` (pc lshift + j/n) to raise lower



Cozad 85T Light Weight Triple 16 Steerable

Steer Trailer

Select Trailer



Use `AXIS_FRONTLOADER_TOOL2` (pc lshift + k/m) to steer



To recenter autosteer point use the fold button/key. After pressing fold the trailer steering will steer the rear dolly to be centered with the trailer



Cozad 85T Light Weight Triple 16 Steerable

Prep trailer for transport

Remove Gooseneck from Trailer



Put jeep and attached gooseneck onto trailer deck, then detach jeep and drive truck off.



Cozad 85T Light Weight Triple 16 Steerable

Lift front of trailer deck with crane



Lower supports (AXIS_FRONTLOADER_TOOL5 (pc lctrl + k/m))



Cozad 85T Light Weight Triple 16 Steerable

Detach crane



Drive truck under deck and attach. Raise supports.

